



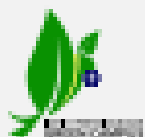
## *TATA KELOLA MENUJU KAMPUS HIJAU*

Prof. Dr. Ir. Riri Fitri Sari, M.M., M.Sc  
Ketua  
UI GreenMetric World University Rankings



**Workshop Persiapan Perankingan UI GreenMetric**  
**Universitas Ahmad Dahlan**  
**23 Desember 2020**

# TUJUH LANGKAH PROGRAM MENUJU *GREEN CAMPUS* 2023





## ■ SUSTAINABILITY DAN PERGURUAN TINGGI

Perguruan tinggi memiliki pengetahuan, sumber daya manusia, dan peran untuk menyelesaikan tantangan global seperti keberlanjutan, air, energi dan perubahan iklim, polusi, perubahan demografi, populasi yang menua, kesehatan publik, kemiskinan dan ketidaksetaraan, bencana alam, dan pendidikan (kualitas hidup).

	<u>UI GreenMetric</u>	<u>THE Impact</u>	<u>AASHE STARS</u>
<b>Overview</b>	The aim of the UI GreenMetric World University Rankings is to enable universities to measure and improve their implementation of sustainability policies and programs.	The Times Higher Education Impact Rankings measure global universities' success in delivering the United Nations' Sustainable Development Goals (SDGs).	The Sustainability Tracking, Assessment & Rating System (STARS) is a self-reporting framework for colleges and universities to measure their sustainability performance.
<b>Recognition Type</b>	Ranking (top to bottom)	Ranking (top to bottom)	Rating (five levels)
<b>Eligibility</b>	Open to any higher education institutions around the world.	Open to universities that teach at an undergraduate level and are validated by a recognized accreditation body.	Open to any higher education institution, as well as other educational institutions such as museums, adult education centers, and secondary schools.
<b>Participation and Uptake</b>	Voluntary. 912 universities from 84 countries in the most recent ranking.	Voluntary. 768 universities from 85 countries in the most recent ranking.	Voluntary. 1,000 registered institutions from 42 countries, of which 450 are either rated or actively pursuing a rating.
<b>Cost</b>	Free access to an online survey. No cost to be included in annual rankings. All participants automatically become members of UI GreenMetric Network for free.	Free access to an online Data Collection Portal. No cost to be included in annual rankings.	Free access to an online Reporting Tool. No cost to publish an online report and earn recognition as a STARS Reporter. A paid subscription is required to earn a STARS Bronze, Silver, Gold, or Platinum rating.
<b>Administrator</b>	Universitas Indonesia (UI), a state university in Jakarta, Indonesia.	Times Higher Education (THE), a London-based for-profit corporation that also administers a variety of other higher education rankings.	The Association for the Advancement of Higher Education (AASHE), a US-based non-profit organization with a mission to inspire and catalyze higher

## ■ SUSTAINABILITY DAN CARA MELAKUKANNYA DI PERGURUAN TINGGI

Perguruan tinggi dan juga fakultas didalamnya memiliki perbedaan dalam tingkat pemahaman, dan implementasi sustainability dalam hal komitmen, kebijakan, program, organisasi, anggaran, sumber daya, dan standar. Pilihan untuk evaluasi implementasi sustainability juga beragam.



## ■ MODEL PENGELOLAAN SUSTAINABILITY

Pertanyaan pada umumnya adalah apa manfaat melakukan sustainability, bagaimana melakukannya, siapa yang melakukannya, berapa anggarannya, bagaimana mengaitkannya dengan visi dan misi, bagaimana menyesuaikan dengan struktur organisasi yang ada.



## SUSTAINABILITY DI UNIVERSITY OF NOTTINGHAM

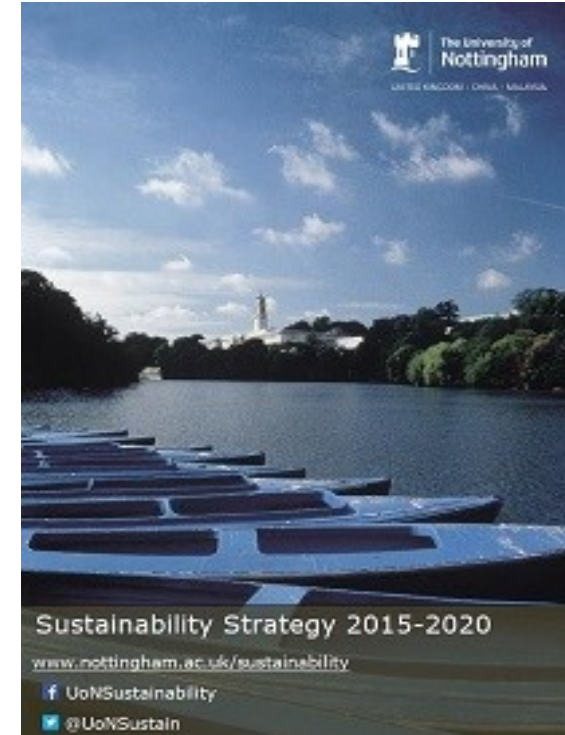
*3<sup>rd</sup> World's Most Sustainable University in UI GreenMetric World University Rankings 2020*

University of Nottingham adalah koordinator nasional UI GreenMetric Network untuk perguruan tinggi di Inggris. Sebagai universitas berkelanjutan. University of Nottingham memiliki kebijakan, strategi, program, komite pengarah, sustainability office, alat monitoring dan evaluasi.

## POLICY AND PERFORMANCE

“ We will make an outstanding contribution to supporting the United Nations Sustainable Development Goals (SDGs) through our research and education, our engagement with partners and our behavior on campus and in our communities. We will place a special emphasis on environmental sustainability, supporting the City of Nottingham’s desire to be a net zero carbon city by 2028 and working with partners in China and Malaysia to improve sustainability within their regions.

**University of Nottingham Strategy**



### ■ KEBIJAKAN, STRATEGI, DAN PROGRAM

University of Nottingham merumuskan kebijakan, strategi, dan program yang dituangkan dalam Sustainability Strategy. Alat monitoring dan evaluasi yang digunakan adalah Eco-campus dan UI GreenMetric.

## GOVERNANCE AND FUNDING

The Director of Sustainability is responsible for sustainability strategy, embedding sustainability at an institutional level, and operational oversight of grounds, energy, carbon management, waste and transport.

- Sustainability: Responsible for providing strategic direction to the University on environmental and social responsibility.
  - Development & Sustainability Director
- Energy and carbon management: Responsible for managing the University's energy and water consumption and Building Management System, and developing projects to reduce carbon emissions and generate renewable energy onsite.
  - Energy Manager
  - Carbon Reduction Manager
  - BMS Controls Engineer
  - Energy Management Officer

## GOVERNANCE AND FUNDING

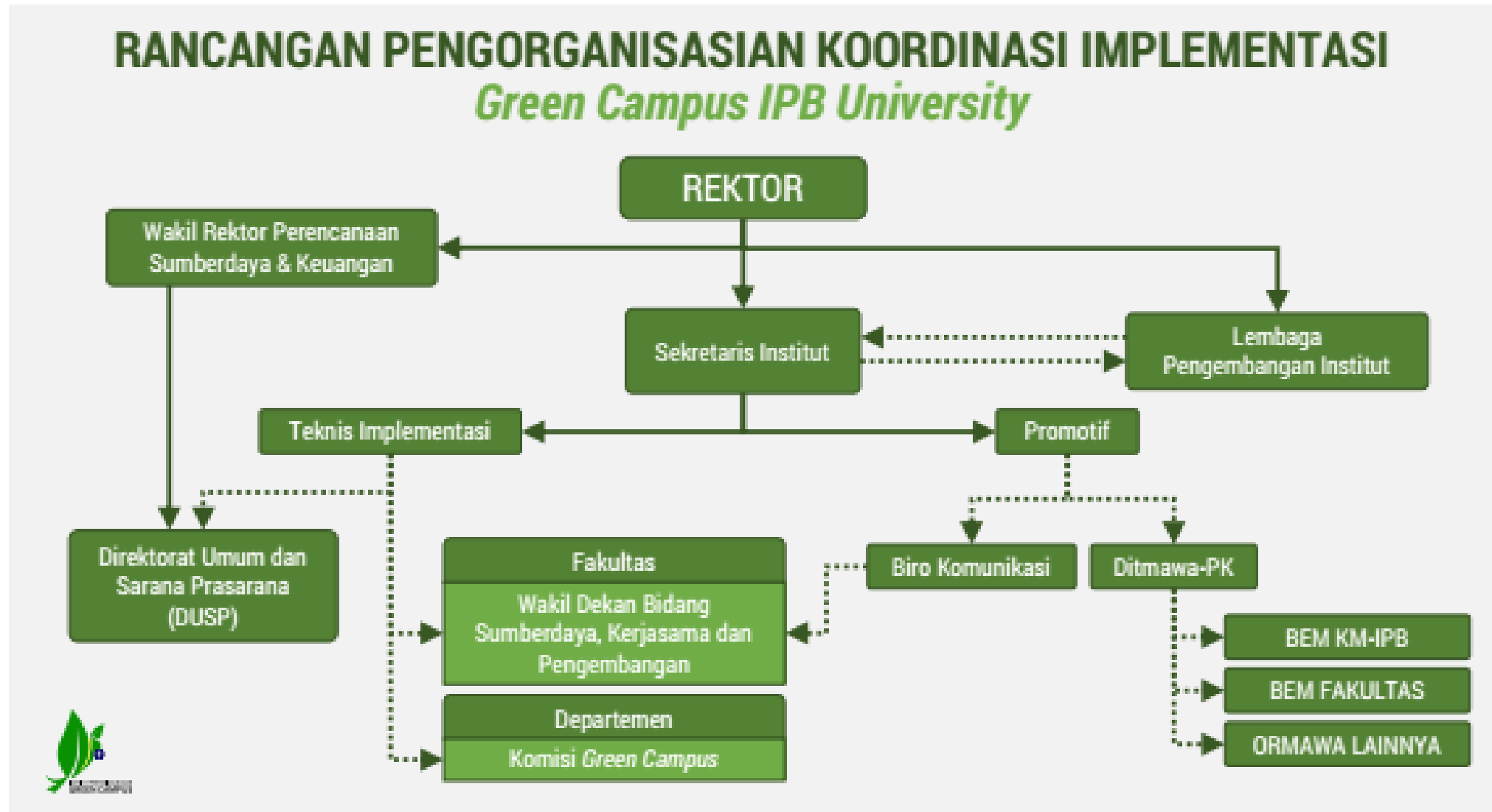
- Environment: Responsible for waste management, sustainable travel initiatives, staff and student engagement on sustainability, and EcoCampus management system.
  - Environmental Manager
  - Sustainability Communications & Engagement Assistant
- Grounds: Responsible for managing and maintaining the University's outdoor spaces - including formal gardens, sports grounds, water features and woodlands - and enhancing the biodiversity of our campuses.
  - Grounds Maintenance Manager - Arboriculture Landscape
  - Grounds Maintenance Manager – Sport
  - Assistant Grounds Maintenance Manager

## SUSTAINABILITY OFFICE

Dalam menjalankan kebijakan, strategi, dan program sustainability, University of Nottingham memiliki Sustainability Office yang bekerjasama dengan komite pengarah, fakultas, dan unit terkait. Direktur Sustainability bertanggungjawab untuk strategi sustainability, implementasi sustainability di tingkat institusi dan operasional yang mencakup infrastruktur, energy, manajemen karbon, limbah dan transportasi



# Contoh Rancangan Organisasi Green Campus



# OPERATION

## Carbon and Energy

### Targets

- Nottingham University set ambitious targets in their Carbon Management Plan for reducing carbon dioxide (CO<sub>2</sub>) emissions to 2020.
- The Plan, which was updated in 2016, includes a framework for large scale investment to deliver these targets.
- The £25m investment programme aims to:
  1. Meet carbon reduction target – 40% absolute reduction from 2009/10 baseline
  2. Reduce energy cost
  3. Improve efficiency
  4. Improve resilience of our energy system

### Progress

- Nottingham University publish annual energy and carbon reports that monitor the progress and provide an update on carbon reduction projects funded during the year.



## KEGIATAN SUSTAINABILITY

Sustainability Office di University of Nottingham memiliki beragam kegiatan dengan target tertentu dan mencakup bidang operasional, pendidikan, kemahasiswaan, dan penelitian. Kegiatan-kegiatan ini melibatkan staf/karyawan, pengajar, peneliti, dan mahasiswa.

## OPERATION

### Teaching and Learning

- The University of Nottingham is keen for all students to be able to access learning that enhances their understanding of sustainability, equipping them to make a positive contribution to a sustainable global society. This may be as part of the formal curriculum through their choice of modules or by participating in extra-curricular activities such as Nottingham Advantage Award, volunteering or internships.
- The University also offers research opportunities in the field of sustainability, both in the UK and at our overseas campuses. Our research portfolio includes projects ranging from carbon capture and storage to corporate social responsibility.



## SUSTAINABILITY UNIVERSITAS AHMAD DAHLAN

Sebagai salah satu perguruan tinggi terkemuka di Indonesia, Universitas Ahmad Dahlan dapat menanyakan kepada dirinya sejauh mana sustainability menjadi visi, misi, kebijakan dan tanggung jawab sosial. Jika sustainability penting, seperti apakah komitmen, tata kelola dan sosialisasinya dalam operasional kampus? Bagaimana mengembangkan sustainability di Universitas Ahmad Dahlan ?